

SEE MODEL 76 RUBBER WIPER BLADE CONVEYOR BELT CLEANER ON OTHER SIDE

MODEL 74 PLOW TYPE CONVEYOR BELT CLEANER WITH SAFETY CHAIN

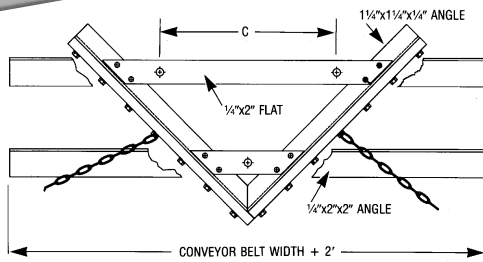


Designed to clean and protect the INSIDE of your conveyor belt

The Model 74 is normally mounted in front of the tail pulley. Material, tools, and foreign objects are swept from belt by the "V" design, thus preventing belt or pulley damage, and possible belt misalignment.

Plow blade pressure to the belt is adjustable. Blade may be set close to the belt (for larger material) or, put in contact with the belt in order to clean away smaller particles. Three adjustment nuts control arrangement of the unit.

The Model 74 plow cleaner is easily installed and will adjust to any type conveyor frame. Our long life 80 durometer (D-80) rubber is used as standard wiper element. When ordering, please specify belt width.



MODEL 74

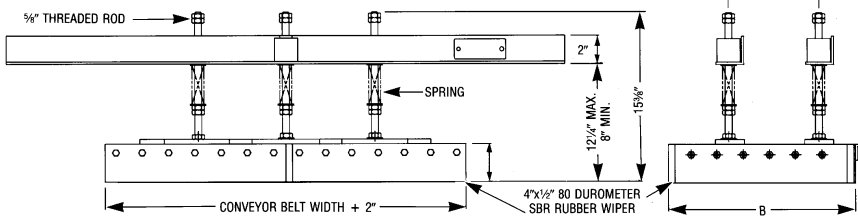
BELT WIDTH	WIPER WIDTH	A	B	C
12"	14"	4"	7"	8 1/2"
16"	18"	6"	9"	12 1/2"
18"	20"	7"	10"	14 1/2"
20"	22"	8"	11"	16 1/2"
24"	26"	10"	13"	20 1/2"
30"	32"	10"	16"	20"
36"	38"	13"	19"	26"
42"	44"	16"	22"	32"

48" AND ABOVE REFER TO MODEL HPT

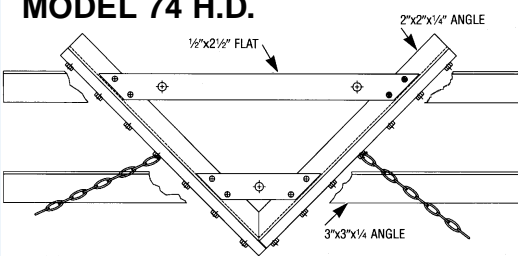
PLOW TYPE INSIDE BELT CLEANER MODEL 74 (assembled)			EXTRA HEAVY DUTY MODEL 74 PLOW TYPE (assembled)		
BELT WD.	SHPG. WT.	PRICE	BELT WD.	SHPG. WT.	PRICE
12"	35 lbs.	\$146.00	12"	95 lbs.	\$253.00
16"	39 lbs.	158.00	16"	101 lbs.	279.00
18"	45 lbs.	162.00	18"	105 lbs.	294.00
20"	47 lbs.	170.00	20"	109 lbs.	306.00
24"	49 lbs.	182.00	24"	115 lbs.	334.00
30"	54 lbs.	207.00	30"	125 lbs.	384.00
36"	61 lbs.	224.00	36"	135 lbs.	422.00
42"	70 lbs.	242.00	42"	145 lbs.	464.00
			48"	155 lbs.	528.00
			54"	165 lbs.	564.00
			60"	175 lbs.	595.00

Above with 1/2"x4" Rubber Plow

Above with 1"x6" Rubber Plow. Extra Heavy Steel Fabrication.

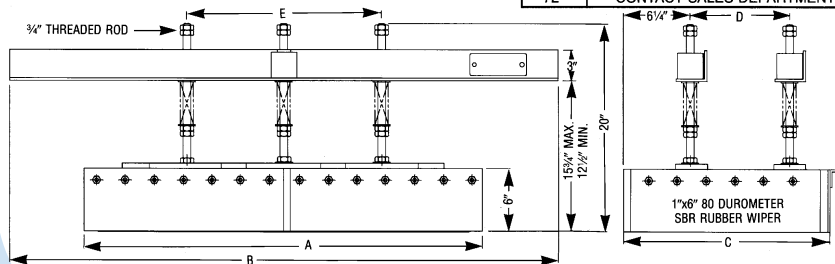


MODEL 74 H.D.



BELT WIDTH	A	B	C	D	E
12"	14"	36"	7"	2 1/2"	5"
16"	18"	40"	9"	4 1/2"	9"
18"	20"	42"	10"	5 1/2"	11"
20"	22"	44"	11"	6 1/2"	13"
24"	26"	48"	13"	8 1/2"	17"
30"	32"	54"	16"	6 1/2"	13"
36"	38"	60"	19"	9 1/2"	19"
42"	44"	66"	22"	12 1/2"	25"
48"	50"	72"	25"	15 1/2"	31"
54"	56"	78"	28"	18 1/2"	37"
60"	62"	84"	31"	21 1/2"	43"
72"					

CONTACT SALES DEPARTMENT



INSTALLATION AND ADJUSTMENT

1. Install cleaner near to the tail pulley with plow against direction of travel.
2. Cross member supports must be positioned to permit easy movement of the plow in vertical direction. Cross members are furnished extra long and excess material can be trimmed off. Weld or bolt cross members to conveyor frame.
3. Stop nuts at top of 3 threaded rods must be adjusted to permit approximately 2 1/2" of downward movement as the rubber wipe wears. These nuts prevent the metal plow frame from touching the belt when the rubber wiper is used up.
4. The springs on the threaded rods can be adjusted by the 2 jam nuts under each. Spring pressure should be adjusted to assure that the plow "rides" smoothly on the belt at all times.
5. The plow is shipped assembled from small units. Large units must be assembled. The 2 sides are bolted to the 2 cross pieces with the screws and lock nuts furnished. The plow is then installed on the cross members.

SPECIAL MODELS of both plow cleaners are available for use on reversing conveyor belts. A diagonal plow with single blade is also available.

®



MATERIAL CONTROL, INC.
197 POPLAR PL. • UNIT 3
P.O. BOX 308
NORTH AURORA, IL 60542-0308



"CHARGE IT"

www.materialcontrolinc.com • email: sales@materialcontrolinc.com
800-926-0376 • 630-892-4274 • FAX 630-892-4931
SUBJECT TO CHANGE WITHOUT NOTICE • TERMS: NET 30 DAYS
F.O.B. FACTORY • TAX NOT INCLUDED • PRICES EFFECTIVE 2/1/06