



MATERIAL CONTROL, INC

130 Seltzer Road

Croswell, MI 48422 U.S.A.

PHONE: (630) 892-4274 • TOLL FREE (800) 926-0376 • FAX: (630) 892-4931

Email: sales@materialcontrolinc.com • <http://www.materialcontrolinc.com/>

MODEL 74 CONVEYOR BELT CLEANER

WARNING:

DEATH or SERIOUS INJURY may occur.

Before installing or adjusting, shut down and physically lock-out the conveyor system.

APPLICATION & INSTALLATION INSTRUCTIONS

GENERAL: The Model 74 cleaner is designed for easy installation and servicing and to clean and protect the inside of your conveyor belt. **Belt size determines size of cleaner to be ordered.**

The model 74 is normally mounted in front of the tail pulley. Material, tools, and foreign objects are swept away from belt by the "V" design, thus preventing belt or pulley damage, and possible belt misalignment.

Plow blade pressure to the belt is adjustable. Blade may be set close to the belt (for larger material) or, put in contact with the belt in order to clean away smaller particles. Three adjustment nuts control arrangement of the unit.

The Model 74 plow cleaner is easily installed and will adjust to any type conveyor frame. Our long life 80 durometer (D-80) rubber is used as standard wiper material. When ordering, please specify belt width.

Special models of both Model 74 and Model 74 H.D. (Heavy Duty) plow cleaners are available for use on reversing conveyor belts. A diagonal plow with single blade is also available.

INSTALLATION AND ADJUSTMENT:

1. Install cleaner near to the tail pulley with plow against direction of travel.
2. Cross member supports must be positioned to permit easy movement of the plow in vertical direction. Cross members are furnished extra-long and excess material can be trimmed off. Weld or bolt cross members to conveyor frame.
3. Stop nuts at top of 3 threaded rods must be adjusted to permit approximately 2 ½" of downward movement as the rubber wiper wears. These nuts prevent the metal plow frame from touching the belt when the rubber wiper is used up.
4. The springs on the threaded rods can be adjusted by the 2 jam nuts under each. Spring pressure should be adjusted to assure that the plow "rides" smoothly on the belt at all times.
5. The plow is shipped assembled for small units. Large units must be assembled. The 2 sides are bolted to the 2 cross pieces with the screws and lock nuts furnished. The plow is then installed on the cross members.

Figure 1: Model 74 Layout Dimensions

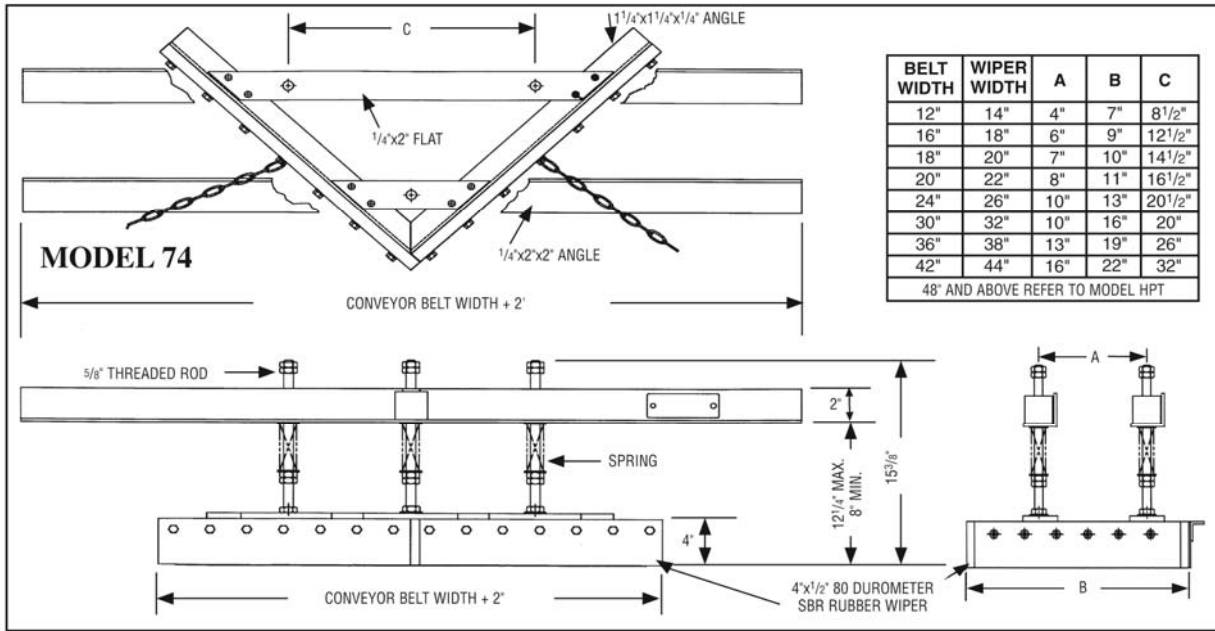


Figure 2: Model 74 H.D. Layout Dimensions

