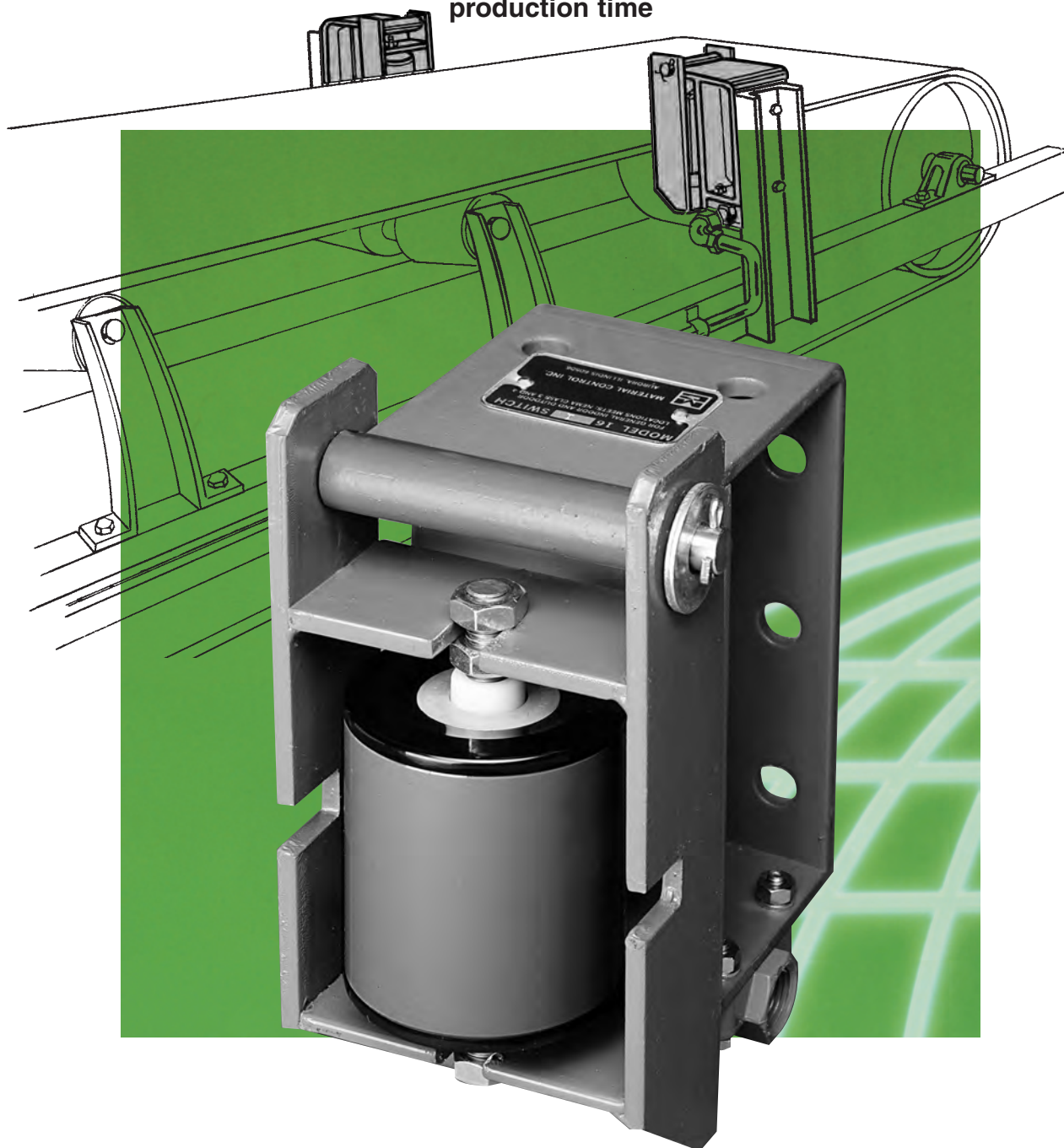


conveyor belt alignment switch

our model 16 conveyor belt alignment switch prevents conveyor belt run-off, decreases downtime and increases production time



MATERIAL CONTROL, INC

197 POPLAR PL. • UNIT 3

P.O. BOX 308

NORTH AURORA, IL 60542-0308

800-926-0376 • 630-892-4274 • FAX 630-892-4931



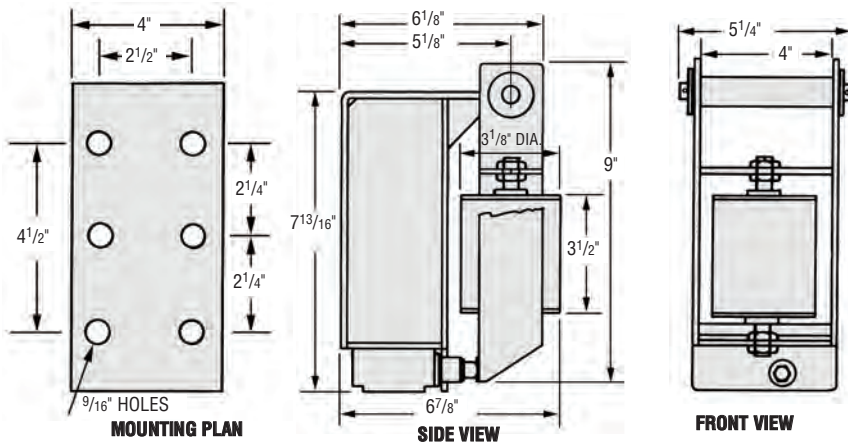
INSTALLATION INSTRUCTIONS:

Model 16 units are always used in pairs with one placed on each side of the conveyor belt, usually near the head end of the conveyor. They may also be placed at the tail pulley and at selected points along the conveyor.

The unit should be mounted on supports so that the roller is perpendicular to the conveyor belt at the mid-point. The roller is 3 1/2" high. The point of interception would be at the 1 3/4" point. Units

should not be mounted too close to the belt because false signal would result. In most applications, the units could be mounted about 1" from the belt, eliminating false signals but protecting belt against wide deviations.

The micro switch can be wired to give warning signals or it can be connected directly into the motor starter circuit to stop a conveyor. The roller moves approximately 1/4" to actuate the micro switch.



MODEL 16 SWITCH ELECTRICAL RATINGS:

MODEL 16-1 — 20 amp @ 125, 250 OR 480 VAC • 1 hp. @ 125 VAC • 2 hp. @ 250 VAC
• 1/2 amp @ 125 VDC • 1/4 amp @ 250 VDC

MODEL 16-2 — 10 amp @ 125 or 250 VAC • 0.3 amp @ 125 VDC • .015 amp @ 250 VDC

MODEL 16-1X — 10 amp @ 125, 250 or 480 VAC • 1/2 amp @ 125 VDC • 1/4 amp @ 250 VDC

MODEL 16-2X — 10 amp @ 125 or 250 VAC • 0.3 amp @ 125 VDC • 0.15 amp @ 250 VDC

MODELS AVAILABLE - SEE PRICE SHEET FOR PRICES

MODEL 16-1

One single pole double throw dust and weather tight micro switch. USE: conveyor shut-off. WEIGHT: 18 lbs. Meets NEMA 1, 3, 4 and 13.

MODEL 16-2

One double pole double throw dust and weather tight switch. USE: conveyor shut-off and alarm or computer interface. WEIGHT: 18 lbs. Meets NEMA 1, 3, 4 and 13.

MODEL 16-1X

One single pole double throw explosion proof micro switch. USE: explosion proof conveyor shut off. WEIGHT: 21 lbs. Meets NEMA 7 class 1 group C & D, NEMA 9 class II groups E, F & G.

MODEL 16-2X

One double pole double throw explosion proof micro switch. USE: explosion proof conveyor shut-off and alarm or computer interface. WEIGHT: 21 lbs. Meets NEMA 7 class I groups B, C & D, NEMA 9 class II groups E, F & G.

SPECIAL MODEL 16H FOR VERTICAL BELTS. . . . A special model 16 can be furnished for sensing deviations in belts running vertically, for instance, bucket elevators, etc. For these applications model 16 has a horizontal rather than vertical roller. To order this model please add "H" to model number (16H), no additional charge.

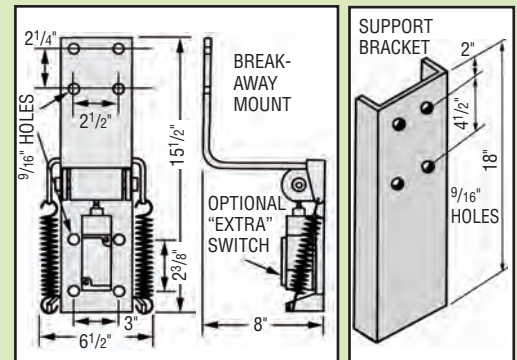
OUR MODEL 16 CONVEYOR BELT ALIGNMENT SWITCH PREVENTS CONVEYOR BELT RUN-OFF! DECREASES DOWNTIME AND INCREASES PRODUCTION

- Inexpensive protection for conveyor belts
- Ruggedly built — not a light duty limit switch
- Easy to install
- Can be bolted directly to discharge chute or mounted to frame

Protect your valuable conveyor belts from severe damage from belt misalignment or run-off. the Model 16 belt alignment switch is designed especially for bulk handling conveyor applications, makes sure that belts are tracking properly, prevents costly downtime and unnecessary maintenance expenses. This rugged, heavy duty switch operates on a very simple principle. Two switches are positioned close to the belt, one on each side, so that any undesirable side-to-side motion will contact a switch roller. The roller "gives" just enough to shut down the system. Thus, conveyor damage and serious downtime are eliminated. Now available with our rugged breakaway mount as optional equipment.

We recommend two switches mounted on opposite sides near the tail pulley and near the head pulley. On conveyors 300' or more, use two more in the center. On short conveyors two switches on tail pulley are adequate.

OPTIONS:



BREAKAWAY MOUNT

Designed especially for high speed conveyors. This new feature allows the switch to perform its job of shutting down the system, but automatically gets it out of the way if a high speed belt does run off before stopping. Automatically returns to unactuated position when belt is realigned.

OPTIONAL "EXTRA" SWITCH

Use this switch when roller activated micro switch is used as an alarm and then this "extra" switch is used to shut off.

SEE PRICE SHEET FOR PRICES

"EXTRA" SWITCH, dust and weather tight (single pole double throw) 10 AMP, NEMA 1, 3, 4, 6 and 13.

PT #16-55

"EXTRA" SWITCH, explosion proof, (single pole double throw) 10 AMP explosion proof NEMA 7 & 9. **PT #16-55X**

SUPPORT BRACKET, not used with breakaway mount .
PT #16-M

®



MATERIAL CONTROL, INC.

197 POPLAR PL. • UNIT 3

P.O. BOX 308

NORTH AURORA, IL 60542-0308

800-926-0376 • 630-892-4274 • FAX 630-892-4931

www.materialcontrolinc.com • email: sales@materialcontrolinc.com



"CHARGE IT"

©Copyright Material Control, Inc. 1992

PRICES SUBJECT TO CHANGE WITHOUT NOTICE

• TAX NOT INCLUDED • TERMS:
NET 30 DAYS • F.O.B. FACTORY