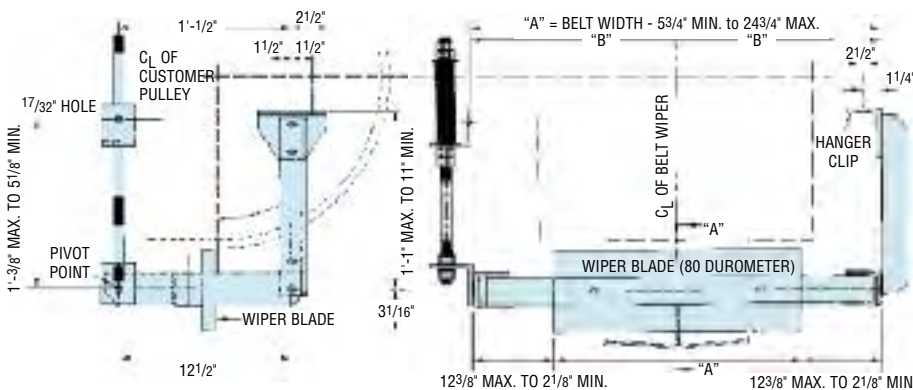
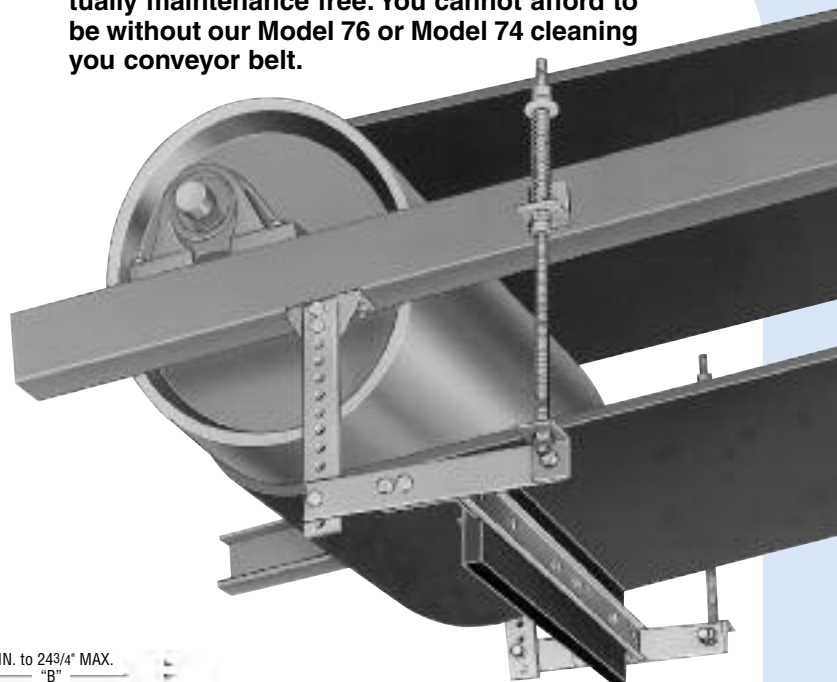


MODEL 76 RUBBER WIPER BLADE CONVEYOR BELT CLEANER AND MODEL 74 PLOW TYPE CONVEYOR BELT CLEANER

MODEL 76 RUBBER WIPER BLADE TYPE CONVEYOR BELT CLEANER

- Eliminates wear by removing abrasive materials
- Saves clean-up expenses, cuts maintenance costs
- Available from stock for belts 12" thru 72" • Can be left in contact with belt even when belt is reversed
- Built-in safety feature: rubber blade can only be returned to extent springs are compressed. Features mechanically adjustable safety stop
- Economical-low initial cost, easy to install and no moving parts
- Highest quality 1"x6" rubber wiper material furnished as standard. Blade is reversible for double wear.

Inexpensive, easy to install, effective and virtually maintenance free. You cannot afford to be without our Model 76 or Model 74 cleaning you conveyor belt.



APPLICATION AND INSTALLATION INSTRUCTIONS:

GENERAL: The Model 76 cleaner is designed for easy installation and servicing. Belt size determines size of cleaner to be ordered. The support bar is long enough to adjust to fit any normal width conveyor frame. Hangers offer ample vertical height adjustment. On reversing conveyors we suggest the use of two Model 76 cleaners. One to be located under each end pulley.

KEEP THESE POINTS IN MIND WHEN INSTALLING:

1. Standard unit adjusts to conveyor frame width as follows: MINIMUM width "A" is 5³/₄" wider than specified belt size. MAXIMUM width "A" is 24³/₄" wider than specified belt size.
2. Make sure discharge chute is large enough to catch droppings.
3. File down any extreme projections on metal splice.
4. For best results position cleaners directly on head pulley.

ORDERING INFORMATION

| BELT WIDTH | NET WT. LBS. | PRICE |
|------------|--------------|----------------------------|
| 12" | 40 | SEE PRICE SHEET FOR PRICES |
| 16" | 42 | |
| 18" | 43 | |
| 20" | 44 | |
| 24" | 47 | |
| 30" | 50 | |
| 36" | 54 | |
| 42" | 57 | |
| 48" | 61 | |
| 54" | 64 | |
| 60" | 68 | |
| 72" | 75 | |

REPLACEMENT BLADES

| BELT WIDTH | NET WT. LBS. | PRICE |
|------------|--------------|----------------------------|
| 12" | 3.2 | SEE PRICE SHEET FOR PRICES |
| 16" | 4.3 | |
| 18" | 4.8 | |
| 20" | 5.3 | |
| 24" | 6.4 | |
| 30" | 8.0 | |
| 36" | 9.6 | |
| 42" | 11.2 | |
| 48" | 12.8 | |
| 54" | 14.4 | |
| 60" | 16.0 | |
| 72" | 19.2 | |

Complete Cleaner has 1"x6" D-80 Rubber Blade. Stainless steel construction available upon quotation.

Made from our own 1"x6" D-80 solid Rubber. Can be used on any rubber wiper type belt cleaner. Blades are cut to length but not drilled or slotted.

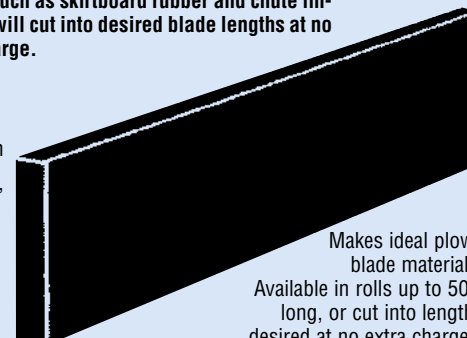
"D-80" CONVEYOR BELT WIPER RUBBER

ABSOLUTELY THE FINEST BELT CLEANER MATERIAL AVAILABLE

(used as standard wiper material on our model 74 and 76 cleaners)

Our D-80 belt wiper rubber is an 80 durometr solid rubber compounded especially for belt cleaning applications. It has the proper stiffness, and probably just as important, it is highly abrasive resistant. We guarantee it to improve the cleaning effectiveness of your belt cleaners.

Now at prices competitive with ineffective substitutes such as skirtboard rubber and chute lining. We will cut into desired blade lengths at no extra charge.



- Straight, smooth edge
- 80 Durometer "D-80" gives proper stiffness for belt cleaning
- Available in 4 sizes from stock.

Makes ideal plow blade material. Available in rolls up to 50' long, or cut into length desired at no extra charge.

There is no extra charge to cut your order into individual lengths if desired. All our rubber is sold on a per foot basis with no extra charge for cutting. We do have a minimum order quantity of \$15.00 on D-80 rubber material.

| PART NO. | GAUGE | WIDTH | NET LBS. PER FT. | PRICE PER LINEAL FT. |
|----------|-------|-------|------------------|----------------------------|
| 0124 | 1/2" | 4" | 1.0 lbs. | SEE PRICE SHEET FOR PRICES |
| 0126 | 1/2" | 6" | 1.6 lbs. | |
| 1006 | 1" | 6" | 3.2 lbs. | |
| 1009 | 1" | 9" | 4.7 lbs. | |



MATERIAL CONTROL, INC.

197 POPLAR PL. • UNIT 3
P.O. BOX 308
NORTH AURORA, IL 60542-0308

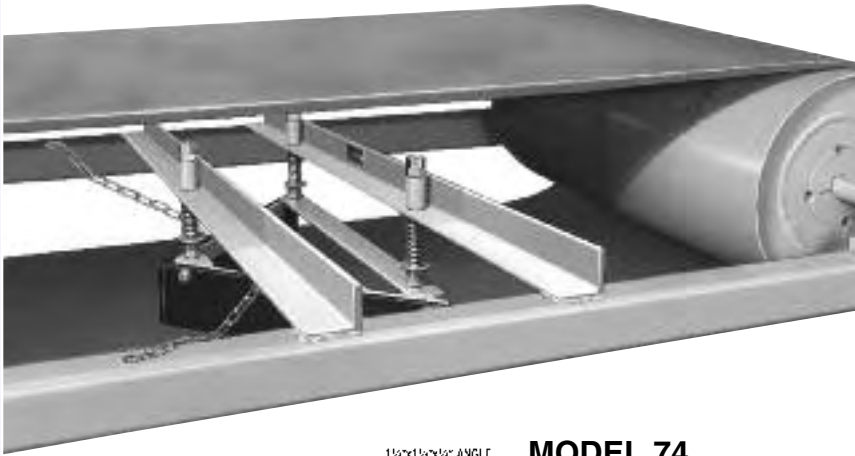
©Copyright 1990 Material Control, Inc.

www.materialcontrolinc.com
email: sales@materialcontrolinc.com

800-926-0376 • 630-892-4274 • FAX 630-892-4931
SUBJECT TO CHANGE WITHOUT NOTICE • TERMS: NET 30 DAYS
F.O.B. FACTORY • TAX NOT INCLUDED

SEE MODEL 76 RUBBER WIPER BLADE CONVEYOR BELT CLEANER ON OTHER SIDE

MODEL 74 PLOW TYPE CONVEYOR BELT CLEANER WITH SAFETY CHAIN

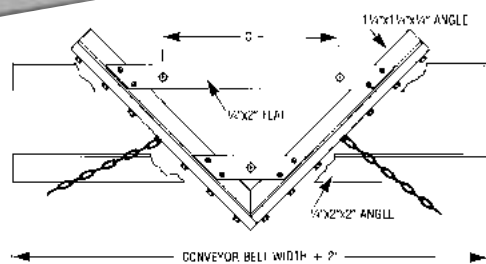


Designed to clean and protect the INSIDE of your conveyor belt

The Model 74 is normally mounted in front of the tail pulley. Material, tools, and foreign objects are swept from belt by the "V" design, thus preventing belt or pulley damage, and possible belt misalignment.

Plow blade pressure to the belt is adjustable. Blade may be set close to the belt (for larger material) or, put in contact with the belt in order to clean away smaller particles. Three adjustment nuts control arrangement of the unit.

The Model 74 plow cleaner is easily installed and will adjust to any type conveyor frame. Our long life 80 durometer (D-80) rubber is used as standard wiper material. When ordering, please specify belt width.



MODEL 74

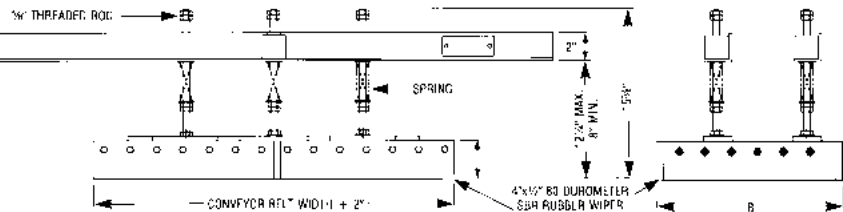
| BELT WIDTH | WIPER WIDTH | A | B | C |
|------------|-------------|-----|-----|---------|
| 12" | 14" | 4" | 7" | 8 1/2" |
| 16" | 18" | 6" | 9" | 12 1/2" |
| 18" | 20" | 7" | 10" | 14 1/2" |
| 20" | 22" | 8" | 11" | 16 1/2" |
| 24" | 26" | 10" | 13" | 20 1/2" |
| 30" | 32" | 10" | 8" | 20" |
| 36" | 38" | 13" | 9" | 26" |
| 42" | 44" | 16" | 22" | 32" |

48" AND ABOVE REFER TO MODEL HPT

| PLOW TYPE INSIDE BELT CLEANER MODEL 74 (assembled) | | | EXTRA HEAVY DUTY MODEL 74 PLOW TYPE (assembled) | | |
|--|-----------|----------------------------|---|-----------|----------------------------|
| BELT WD. | SHPG. WT. | PRICE | BELT WD. | SHPG. WT. | PRICE |
| 12" | 35 lbs. | SEE PRICE SHEET FOR PRICES | 12" | 95 lbs. | SEE PRICE SHEET FOR PRICES |
| 16" | 39 lbs. | | 16" | 101 lbs. | |
| 18" | 45 lbs. | | 18" | 105 lbs. | |
| 20" | 47 lbs. | | 20" | 109 lbs. | |
| 24" | 49 lbs. | | 24" | 115 lbs. | |
| 30" | 54 lbs. | | 30" | 125 lbs. | |
| 36" | 61 lbs. | | 36" | 135 lbs. | |
| 42" | 70 lbs. | | 42" | 145 lbs. | |
| | | | 48" | 155 lbs. | |
| | | | 54" | 165 lbs. | |
| | | 60" | 175 lbs. | | |

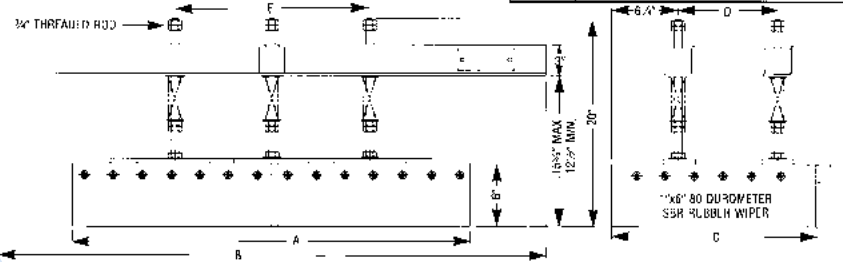
Above with 1/2"x4" Rubber Plow

Above with 1"x6" Rubber Plow. Extra Heavy Steel Fabrication.



MODEL 74 H.D.

| BELT WIDTH | A | B | C | D | E |
|------------|--------------------------|-----|-----|---------|-----|
| 12" | 4" | 36" | 7" | 2 1/2" | 5" |
| 16" | 8" | 40" | 9" | 4 1/2" | 9" |
| 18" | 20" | 42" | 10" | 5 1/2" | 11" |
| 20" | 22" | 44" | 11" | 6 1/2" | 13" |
| 24" | 26" | 48" | 13" | 8 1/2" | 17" |
| 30" | 32" | 54" | 16" | 6 1/2" | 13" |
| 36" | 38" | 60" | 19" | 9 1/2" | 19" |
| 42" | 44" | 66" | 22" | 12 1/2" | 25" |
| 48" | 50" | 72" | 25" | 15 1/2" | 31" |
| 54" | 56" | 78" | 28" | 18 1/2" | 37" |
| 60" | 62" | 84" | 31" | 21 1/2" | 43" |
| 72" | CONTACT SALES DEPARTMENT | | | | |



INSTALLATION AND ADJUSTMENT

1. Install cleaner near to the tail pulley with plow against direction of travel.
2. Cross member supports must be positioned to permit easy movement of the plow in vertical direction. Cross members are furnished extra long and excess material can be trimmed off. Weld or bolt cross members to conveyor frame.
3. Stop nuts at top of 3 threaded rods must be adjusted to permit approximately 2 1/2" of downward movement as the rubber wiper wears. These nuts prevent the metal plow frame from touching the belt when the rubber wiper is used up.
4. The springs on the threaded rods can be adjusted by the 2 jam nuts under each. Spring pressure should be adjusted to assure that the plow "rides" smoothly on the belt at all times.
5. The plow is shipped assembled for small units. Large units must be assembled. The 2 sides are bolted to the 2 cross pieces with the screws and lock nuts furnished. The plow is then installed on the cross members.

SPECIAL MODELS of both plow cleaners are available for use on reversing conveyor belts. A diagonal plow with single blade is also available.



MATERIAL CONTROL, INC.
197 POPLAR PL. • UNIT 3
P.O. BOX 308
NORTH AURORA, IL 60542-0308



"CHARGE IT"

www.materialcontrolinc.com • email: sales@materialcontrolinc.com
800-926-0376 • 630-892-4274 • FAX 630-892-4931
SUBJECT TO CHANGE WITHOUT NOTICE • TERMS: NET 30 DAYS
F.O.B. FACTORY • TAX NOT INCLUDED